

Thermostat KO/KS/KB

Thermostat with snap-action disk: regulator, automatic controller, limiter

ISO 9001
BUREAU VERITAS
Certification



Applications

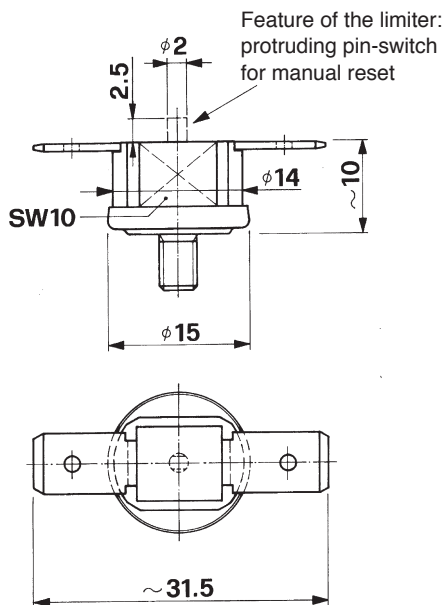
The very compact snap-action disk thermostats are designed for current loads of up to 16A and have a wide range of applications. These thermostats can be used in regulator applications to maintain a constant temperature (normally closed or normally open); they can be used as thermal switches in monitoring applications (normally closed or normally open); or they can be used as limiters (normally closed) with mechanical resetting.

The thermostats are used everywhere where overheating protection is required in a minimum of space.

- Domestic appliances
- Coffee machines
- Electrical equipment
- Motors
- Heaters



General dimensions*



Technical specifications

Switching performance

| | | |
|----|---|------------------------|
| KS | { | 16 (4) A 250 V ac |
| KO | | 6'000 switching cycles |
| KB | { | 16 (4) A 250 V ac |
| | | 2'500 switching cycles |

Maximum speed of
Temperature change

10° K/Min

Differential gap

10° – 20°C
(smaller values on request)

Maximum switching temp. KO/KS
KB

190°C
180°C

Electrical insulation

> 2800 V

Design

As per EN 60730
• micro-contact-breaker
• type 1C

Contact material

Silver alloy
(KO/KS in gold
on request)

Approval

VDE, UL etc.

* Detailed dimensions and a key to the order numbers are given on the following pages



KIENZLER AG

UNT. BAHNHOFSTR. 27
CH-8340 HINWIL
SWITZERLAND
Tel. 0041 (0)44 937 10 30
Fax 0041 (0)44 937 24 04

E-Mail: kienzlerinfo@kienzler.ch web: www.kienzler.ch

Thermostat KO/KS/KB

Thermostat with snap-action disk: regulator, automatic controller, limiter

Connection variants



Fig. 4 Flat plugs
6.3 x 0.8
bent sideways

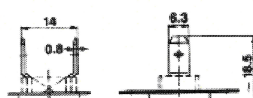


Fig. 6 Flat plugs
6.3 x Ø:8 turned up
vertically

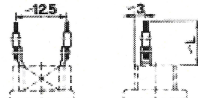


Fig. 8 Insulated strand
0.5 mm², Lengths
L=150, 300, 600 mm



Fig. 9 Connections
sideways
without cable



Fig. 10 «Crimp-lugs»
onside 0.5 mm

*) Size of the manual reset: cf. general dimensions on previous page

Mounting variants

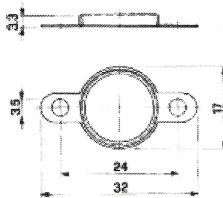


Fig. 11 Flange with
bilateral mounting,
cranked

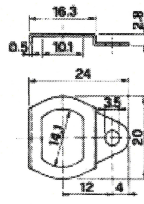


Fig. 12 Flange with
unilateral mounting,
cranked

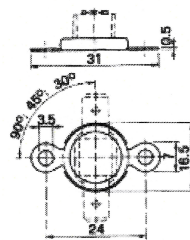


Fig. 13 Cover with
arresting flange

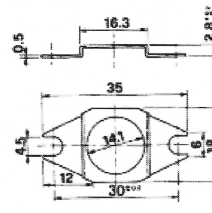


Fig. 14 Special
longitudinal flange
for M-4 screws

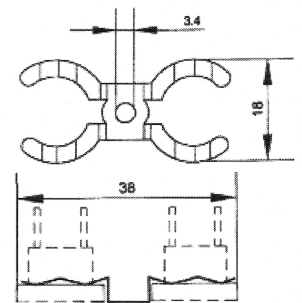


Fig. 15 Special
longitudinal flange
for 2 thermostats

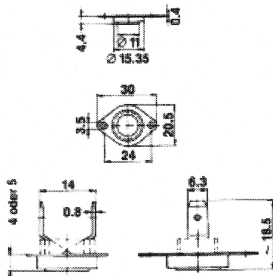


Fig. 16 Flange with
bilateral mounting,
recessed

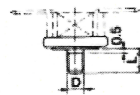


Fig. 17 Screw mounting

| D | L |
|----|----|
| M4 | 6 |
| M4 | 10 |
| M4 | 16 |
| M5 | 6 |

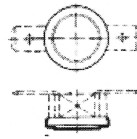


Fig. 18 Encapsulated
bimetallic disk

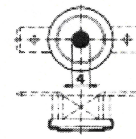


Fig. 19 Uncovered
bimetallic disk

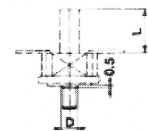


Fig. 20 Lengthening
reset cap for limiter

| D | L |
|----|----|
| Ø4 | 11 |
| Ø4 | 6 |
| Ø4 | 4 |



KIENZLER AG

UNT. BAHNHOFSTR. 27
CH-8340 HINWIL
SWITZERLAND
Tel. 0041 (0)44 937 10 30
Fax 0041 (0)44 937 24 04

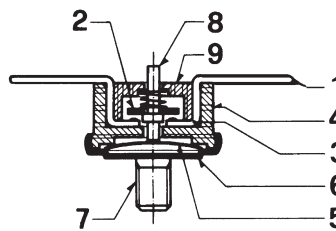
E-Mail: kienzlerinfo@kienzler.ch web: www.kienzler.ch

Thermostat KO/KS/KB

Thermostat with snap-action disk: regulator, automatic controller, limiter

Mode of action

The thermostats respond to a fixed temperature that is determined by a snap-action bimetallic disk. The action of the bimetallic disk is mechanically transmitted to a bridge contact via a transfer pin, so that the electrical circuit is either open or closed, depending on the state of the bimetallic disk.



Key

- 1 = Connection
- 2 = Contact plate
- 3 = Double contact-breaker
- 4 = Housing
- 5 = Bimetallic disk
- 6 = Heat-conducting plate
- 7 = Fixing screw (various)
- 8 = Pin-switch (various)
- 9 = Cover

Note

It is the responsibility of the customer to verify the suitability of the intended use. We can provide no guarantees in this regard. However, we will be happy to advise you.

ISO 9001
BUREAU VERITAS
Certification



KIENZLER AG

UNT. BAHNHOFSTR. 27
CH-8340 HINWIL
SWITZERLAND
Tel. 0041 (0)44 937 10 30
Fax 0041 (0)44 937 24 04

E-Mail: kienzlerinfo@kienzler.ch web: www.kienzler.ch